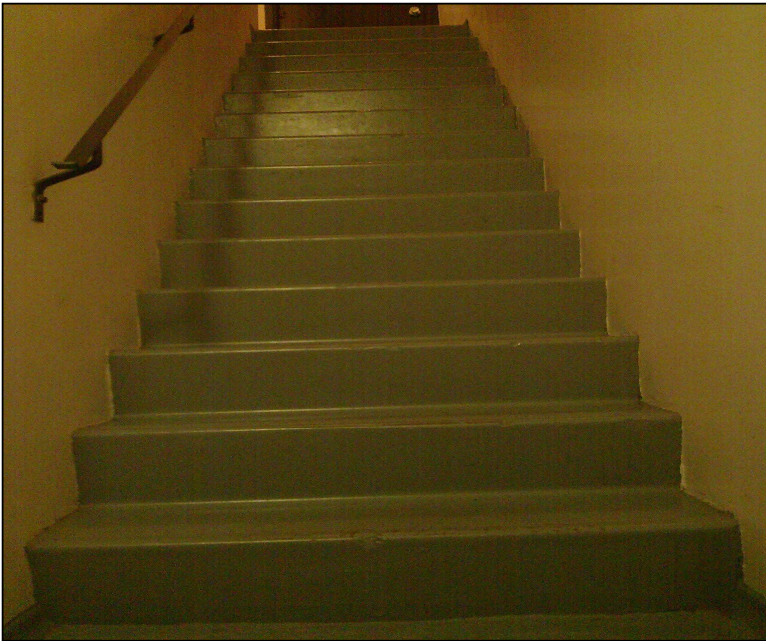


CS 888: Topics in Computer Graphics - Architecture

Assignment #1: Stairs

Khalid Alsubhi

Example 1: Beacon Tower



- rise = 7.67", run = 9.84"
- rise \times run = 75.49
- rise + run = 17.51
- 2*rise + run = 25.18
- slope = 37.9 degrees
- Feel: Comfortable

Example 2: Home



- rise = 7.85", run = 10.2"
- rise \times run = 80.07
- rise + run = 18.05
- 2*rise + run = 25.9
- slope = 37.58 degrees
- Feel: fine